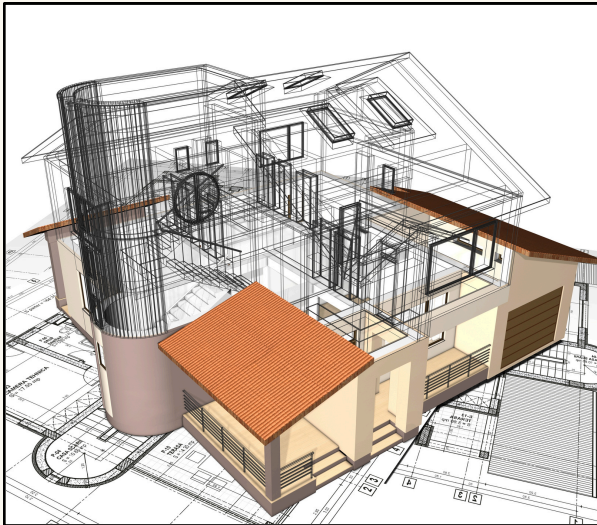




Community Design Challenge 2025



ARCHITECTURAL DESIGN COMPETITION



The Community Design Challenge is an architectural design competition where Tulare and Kings county high school students research, understand, and design a solution to a challenge in their own community. These challenges can be functional, civic, climatic, or structural challenges. The goal is to identify the problem and then design a solution following an architectural and engineering design process.

**Contact: Emilia Wade at
(559) 302-3670 or
emilia.wade@tcoe.org**

**Tulare County
Office of Education**

Tim A. Hire, County Superintendent of Schools

Project Launch: January 15, 2025
(mandatory for all registered teams to attend)

30-day check-in: February 12, 2025
60-day check-in: March 12, 2025
90-day check-in: April 7, 2025
Final Presentations: May 13, 2025